

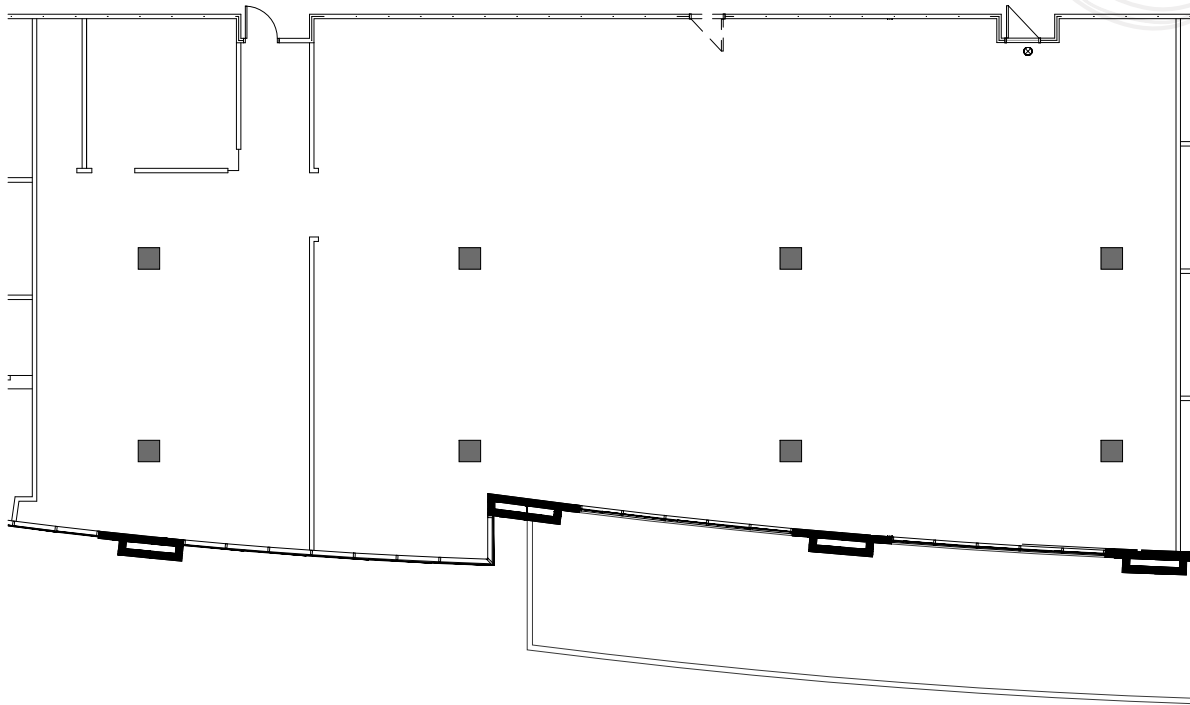




**3900**  
**CAMELBACK**

# FLOOR PLAN

3900 E. Camelback Road | Phoenix, Arizona



**SUITE**  
**160**  
±5,909 RSF

**PHIL BREIDENBACH, SIOR**  
Senior Executive Vice President  
DIR +1 602 222 5073  
phil.breidenbach@colliers.com

**MICHAEL MARSH, CCIM**  
Associate Vice President  
DIR +1 602 222 5177  
michael.marsh@colliers.com

**KYLE YORK**  
Senior Associate  
DIR +1 602 222 5094  
kyle.york@colliers.com

**MATT BANISZEWSKI**  
Associate Vice President  
DIR +1 602 222 5176  
matt.baniszewski@colliers.com

**COLLIERS** | 2390 E Camelback Rd, Ste 100 Phoenix, Arizona 85016 | [colliers.com/arizona](https://colliers.com/arizona)

Copyright © 2023 Colliers.

Information herein has been obtained from sources deemed reliable, however its accuracy cannot be guaranteed. The user is required to conduct their own due diligence and verification.

**Colliers**

**RYAN**



**WILSHIRE CAPITAL**  
PARTNERS



# FLOOR PLAN

3900 E. Camelback Road | Phoenix, Arizona

**PHIL BREIDENBACH, SIOR**  
Senior Executive Vice President  
DIR +1 602 222 5073  
phil.breidenbach@colliers.com

**MICHAEL MARSH, CCIM**  
Associate Vice President  
DIR +1 602 222 5177  
michael.marsh@colliers.com

**KYLE YORK**  
Senior Associate  
DIR +1 602 222 5094  
kyle.york@colliers.com

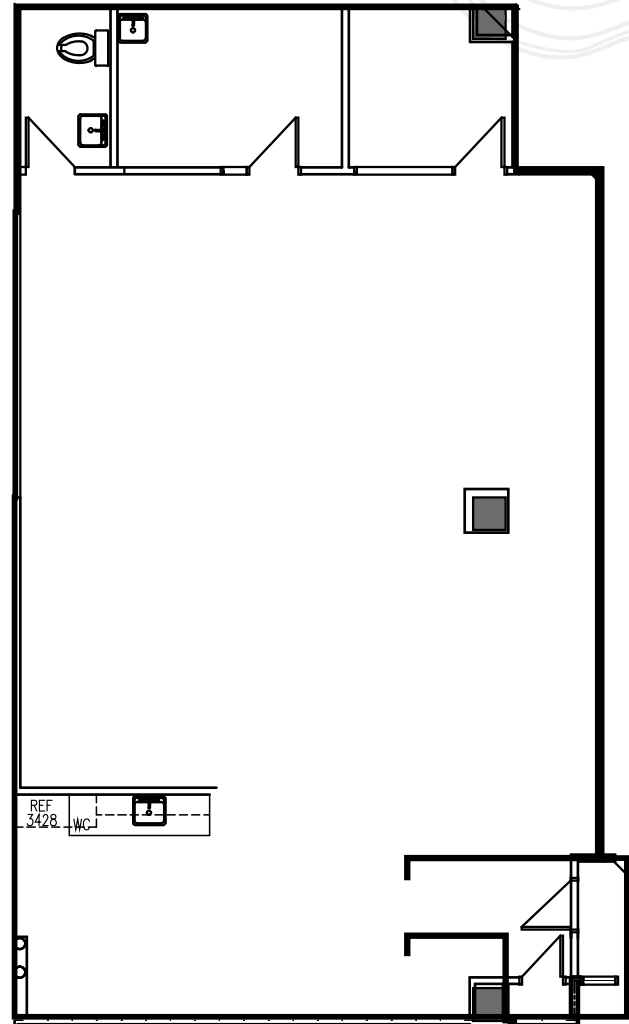
**MATT BANISZEWSKI**  
Associate Vice President  
DIR +1 602 222 5176  
matt.baniszewski@colliers.com

**COLLIERS** | 2390 E Camelback Rd,  
Ste 100, Phoenix, Arizona 85016  
colliers.com/arizona

**Colliers** **RYAN**

**WILSHIRE CAPITAL**  
P A R T N E R S

Copyright © 2023 Colliers. Information herein has been obtained from sources deemed reliable, however its accuracy cannot be guaranteed. The user is required to conduct their own due diligence and verification.



**SUITE**  
**185**

**±2,473 RSF**

Contiguous to ±10,693 RSF  
with Suite 190

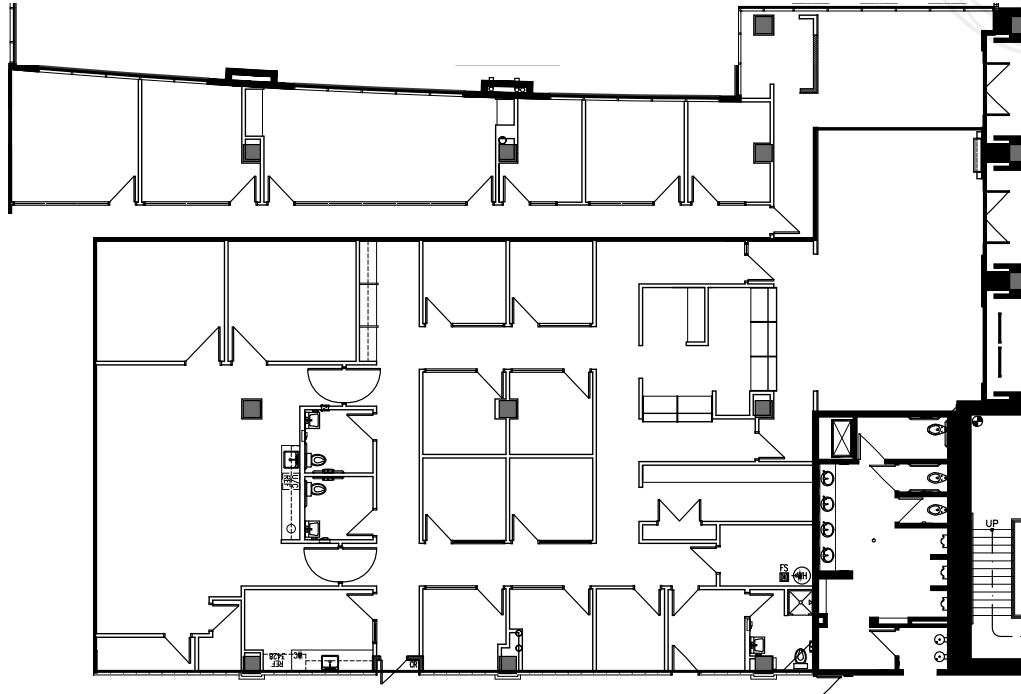




# 3900 CAMELBACK

# FLOOR PLAN

3900 E. Camelback Road | Phoenix, Arizona



SUITE  
**190**

±8,220 RSF

Contiguous to ±10,693 RSF  
with Suite 185

**PHIL BREIDENBACH, SIOR**  
Senior Executive Vice President  
DIR +1 602 222 5073  
phil.breidenbach@colliers.com

**MICHAEL MARSH, CCIM**  
Associate Vice President  
DIR +1 602 222 5177  
michael.marsh@colliers.com

**KYLE YORK**  
Senior Associate  
DIR +1 602 222 5094  
kyle.york@colliers.com

**MATT BANISZEWSKI**  
Associate Vice President  
DIR +1 602 222 5176  
matt.baniszewski@colliers.com

**COLLIERS** | 2390 E Camelback Rd, Ste 100 Phoenix, Arizona 85016 | [colliers.com/arizona](https://colliers.com/arizona)

Copyright © 2023 Colliers.

Information herein has been obtained from sources deemed reliable, however its accuracy cannot be guaranteed. The user is required to conduct their own due diligence and verification.

**Colliers**

**RYAN**



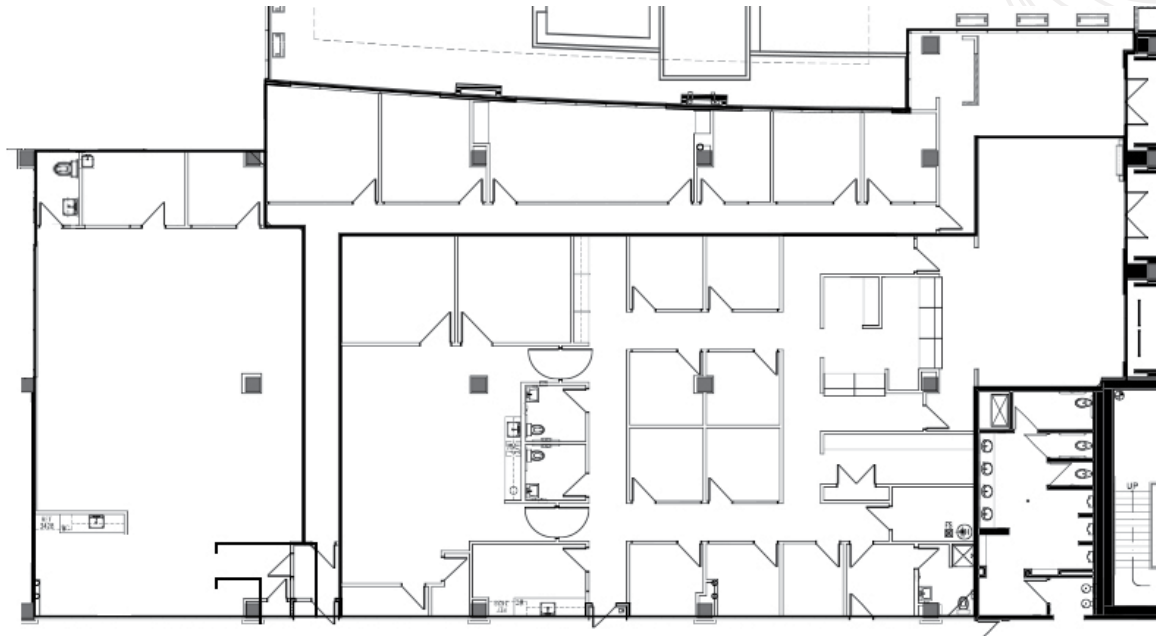
**WILSHIRE CAPITAL**  
PARTNERS



# 3900 CAMELBACK

# FLOOR PLAN

3900 E. Camelback Road | Phoenix, Arizona



SUITE

# 185 & 190

±10,693 RSF



**PHIL BREIDENBACH, SIOR**  
Senior Executive Vice President  
DIR +1 602 222 5073  
phil.breidenbach@colliers.com

**MICHAEL MARSH, CCIM**  
Associate Vice President  
DIR +1 602 222 5177  
michael.marsh@colliers.com

**KYLE YORK**  
Senior Associate  
DIR +1 602 222 5094  
kyle.york@colliers.com

**MATT BANISZEWSKI**  
Associate Vice President  
DIR +1 602 222 5176  
matt.baniszewski@colliers.com

**COLLIERS** | 2390 E Camelback Rd, Ste 100 Phoenix, Arizona 85016 | [colliers.com/arizona](https://colliers.com/arizona)

Copyright © 2023 Colliers.

Information herein has been obtained from sources deemed reliable, however its accuracy cannot be guaranteed. The user is required to conduct their own due diligence and verification.

**Colliers**

**RYAN**



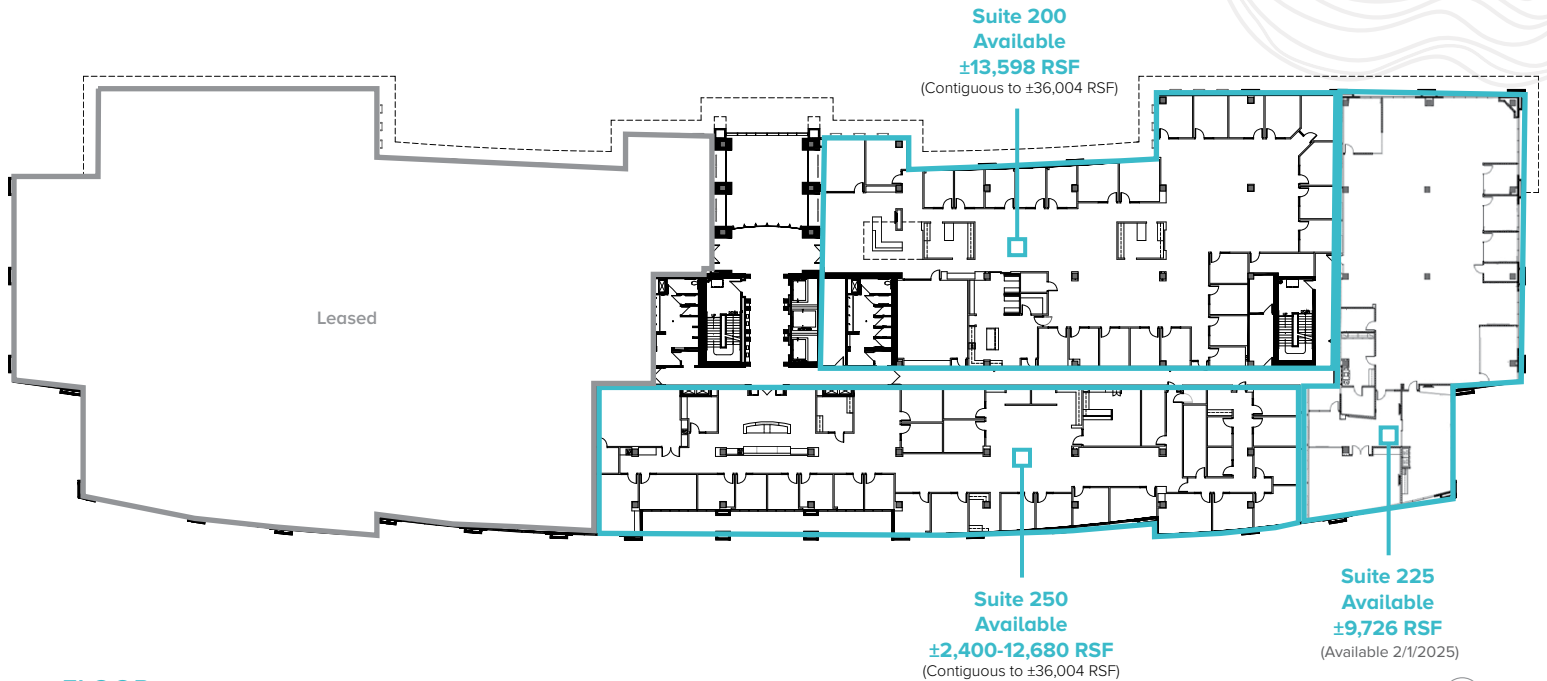
**WILSHIRE CAPITAL**  
PARTNERS



# 3900 CAMELBACK

# FLOOR PLAN

3900 E. Camelback Road | Phoenix, Arizona



FLOOR

2

**PHIL BREIDENBACH, SIOR**  
Senior Executive Vice President  
DIR +1 602 222 5073  
phil.breidenbach@colliers.com

**MICHAEL MARSH, CCIM**  
Associate Vice President  
DIR +1 602 222 5177  
michael.marsh@colliers.com

**KYLE YORK**  
Senior Associate  
DIR +1 602 222 5094  
kyle.york@colliers.com

**MATT BANISZEWSKI**  
Associate Vice President  
DIR +1 602 222 5176  
matt.baniszewski@colliers.com

**COLLIERS** | 2390 E Camelback Rd, Ste 100 Phoenix, Arizona 85016 | [colliers.com/arizona](http://colliers.com/arizona)

Copyright © 2023 Colliers.

Information herein has been obtained from sources deemed reliable, however its accuracy cannot be guaranteed. The user is required to conduct their own due diligence and verification.

**Colliers**

**RYAN**



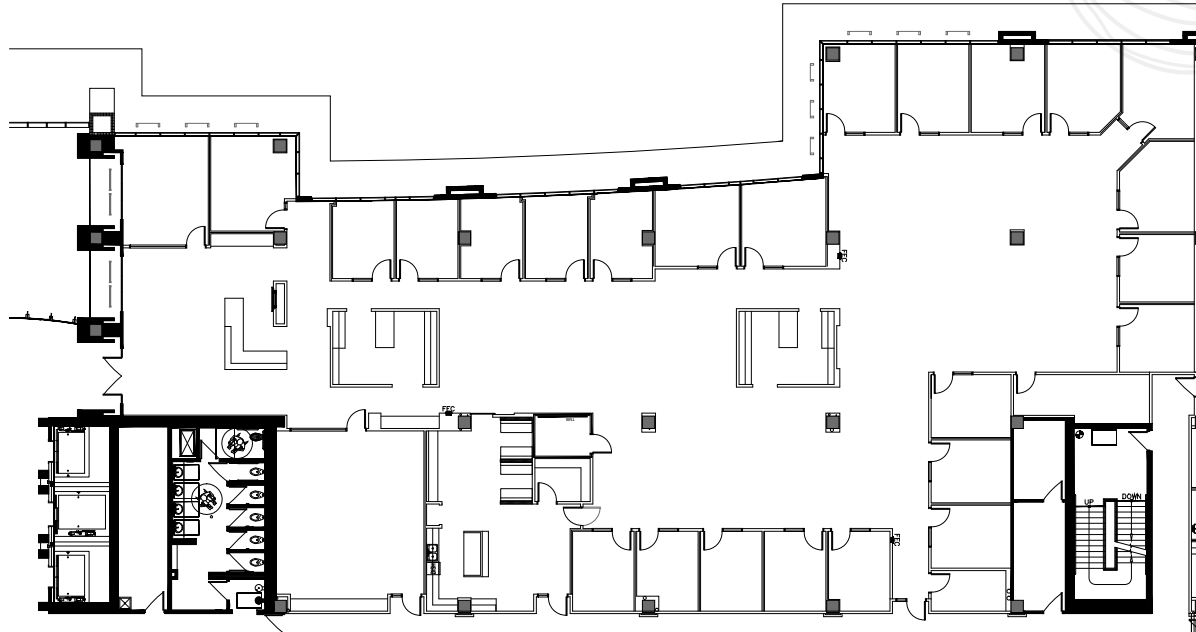
**WILSHIRE CAPITAL**  
PARTNERS



# 3900 CAMELBACK

# FLOOR PLAN

3900 E. Camelback Road | Phoenix, Arizona



## SUITE 200

±13,598 RSF

Contiguous to ±36,004 RSF  
with Suites 225 & 250



**PHIL BREIDENBACH, SIOR**  
Senior Executive Vice President  
DIR +1 602 222 5073  
phil.breidenbach@colliers.com

**MICHAEL MARSH, CCIM**  
Associate Vice President  
DIR +1 602 222 5177  
michael.marsh@colliers.com

**KYLE YORK**  
Senior Associate  
DIR +1 602 222 5094  
kyle.york@colliers.com

**MATT BANISZEWSKI**  
Associate Vice President  
DIR +1 602 222 5176  
matt.baniszewski@colliers.com

**COLLIERS** | 2390 E Camelback Rd, Ste 100 Phoenix, Arizona 85016 | [colliers.com/arizona](https://colliers.com/arizona)

Copyright © 2023 Colliers.

Information herein has been obtained from sources deemed reliable, however its accuracy cannot be guaranteed. The user is required to conduct their own due diligence and verification.

**Colliers**

**RYAN**



**WILSHIRE CAPITAL**  
PARTNERS



# 3900 CAMELBACK

# FLOOR PLAN

3900 E. Camelback Road | Phoenix, Arizona

**PHIL BREIDENBACH, SIOR**

Senior Executive Vice President  
DIR +1 602 222 5073  
phil.breidenbach@colliers.com

**MICHAEL MARSH, CCIM**

Associate Vice President  
DIR +1 602 222 5177  
michael.marsh@colliers.com

**KYLE YORK**

Senior Associate  
DIR +1 602 222 5094  
kyle.york@colliers.com

**MATT BANISZEWSKI**

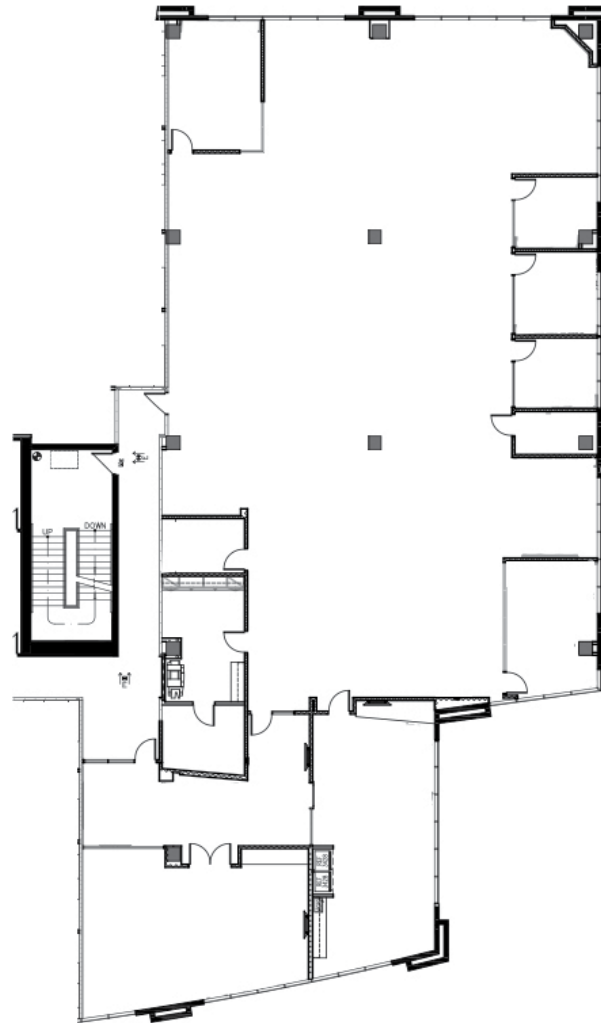
Associate Vice President  
DIR +1 602 222 5176  
matt.baniszewski@colliers.com

**COLLIERS** | 2390 E Camelback Rd,  
Ste 100, Phoenix, Arizona 85016  
colliers.com/arizona

**Colliers** **RYAN**

**WILSHIRE CAPITAL**  
P A R T N E R S

Copyright © 2023 Colliers. Information herein has been obtained from sources deemed reliable, however its accuracy cannot be guaranteed. The user is required to conduct their own due diligence and verification.



**SUITE**

# 225

**±9,726 RSF**

Contiguous to ±36,RSF with  
Suites 200 & 250  
(Available 2/1/2025)



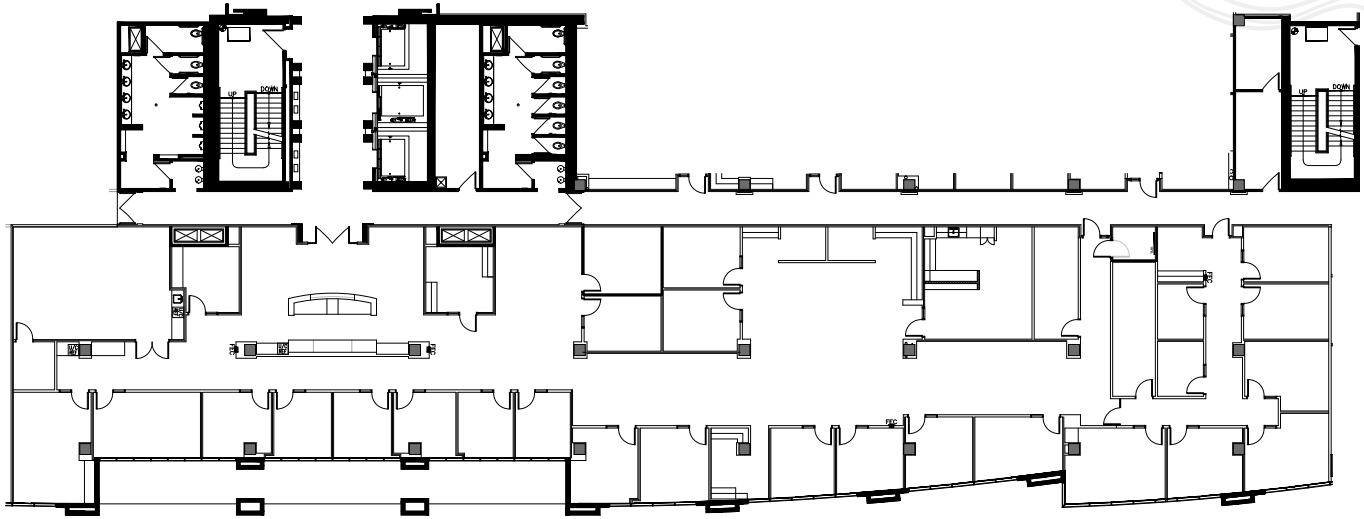




# 3900 CAMELBACK

# FLOOR PLAN

3900 E. Camelback Road | Phoenix, Arizona



## SUITE

# 250

±2,400 RSF-12,680 RSF

Contiguous to ±36,004 RSF  
with Suites 200 & 225



**PHIL BREIDENBACH, SIOR**  
Senior Executive Vice President  
DIR +1 602 222 5073  
phil.breidenbach@colliers.com

**MICHAEL MARSH, CCIM**  
Associate Vice President  
DIR +1 602 222 5177  
michael.marsh@colliers.com

**KYLE YORK**  
Senior Associate  
DIR +1 602 222 5094  
kyle.york@colliers.com

**MATT BANISZEWSKI**  
Associate Vice President  
DIR +1 602 222 5176  
matt.baniszewski@colliers.com

**COLLIERS** | 2390 E Camelback Rd, Ste 100 Phoenix, Arizona 85016 | [colliers.com/arizona](https://colliers.com/arizona)

Copyright © 2023 Colliers.

Information herein has been obtained from sources deemed reliable, however its accuracy cannot be guaranteed. The user is required to conduct their own due diligence and verification.

**Colliers**

**RYAN**



**WILSHIRE CAPITAL**  
P A R T N E R S